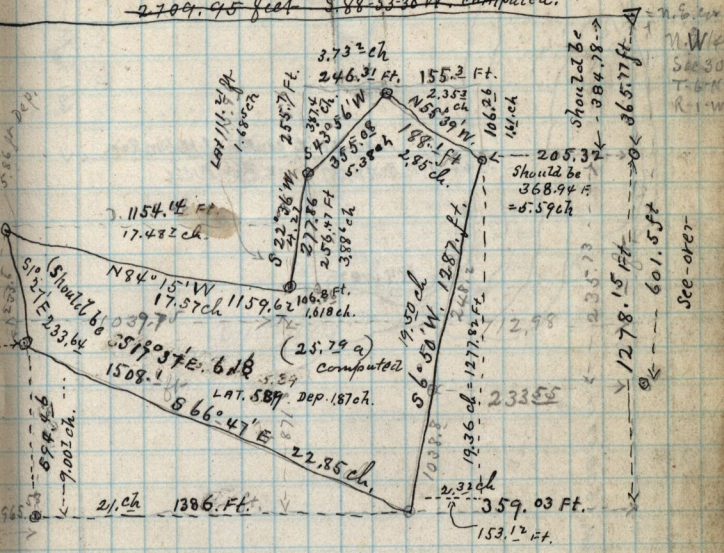


~~2709.95 feet~~ $S. 88^{\circ} 53' 30'' W$, computed.



Copy of deed from Thom. Reed to Edward Maw dated May 18-1876 - L-217 - Part of N.W. 1/4 Sec 30 T-6-N-R-1-W. Beg. 1.63 ch N. from N.E. cor. 1/4 Sec. W. 12.50 ch, S. 55° 39' E, 10.34 ch. N 27° 51' E 1.31 ch, N. 13° 27' E 4.55 ch to brg. 4 a (last course ^{my} Dist. is wrong. it will not reach point of beg. Should be N. 35° 39' E 5.75 ch. computed)

The deed to the above ^{piece of} tract of land begins 15.10 ch S. 14.63 ch E. from N.W. cor. of N.W. 1/4 Sec 30 thence S 66° 47' E 22.85 ch N 6° 50' E 19.50 ch, N 55° 39' W 2.85 S 43° 56' W 5.38 ch, S 22° 36' W 4.21 ch N 84° 15' W 17.53 ch, S 1° 27' E 3.54 ch to brg. 2 c a, deed from Sam Reed to Richard Ringrose dated March 30-1873 - L-164 -